

Peck & Woods addition to T. W. H. P.

Town of Salisbury

N: 18068
Filed July 3rd.
A. D. 1855, at 3 o'clock P.M.

CORPORATION LIMITS.

70 FT. 70 FT. 70 FT. 70 FT. 70 FT. 70 FT. 70 FT. 70 FT.

8	7	6	5	4	3	2	1
BLOCK 1.							
9	10	11	12	13	14	15	16

66 FT. 66 FT. 66 FT. 66 FT. 66 FT. 66 FT. 66 FT. 66 FT.

11	10	9	8	7	6	5	4	3	2	1
BLOCK 3.										
14	15	16	17	18	19	20	21	22	23	24

66 FT. 66 FT. 66 FT. 66 FT. 66 FT. 66 FT. 66 FT. 66 FT. 66 FT. 66 FT. 66 FT.

14	15	14	13	12	11	10	9	8	7	6	5	4	3	2	1
BLOCK 5.															
17	18	19	20	21	22	23	24	25	26	27	28	29	30	730 FT.	

70 FT. 70 FT. 70 FT. 70 FT. 70 FT. 70 FT. 70 FT. 70 FT.

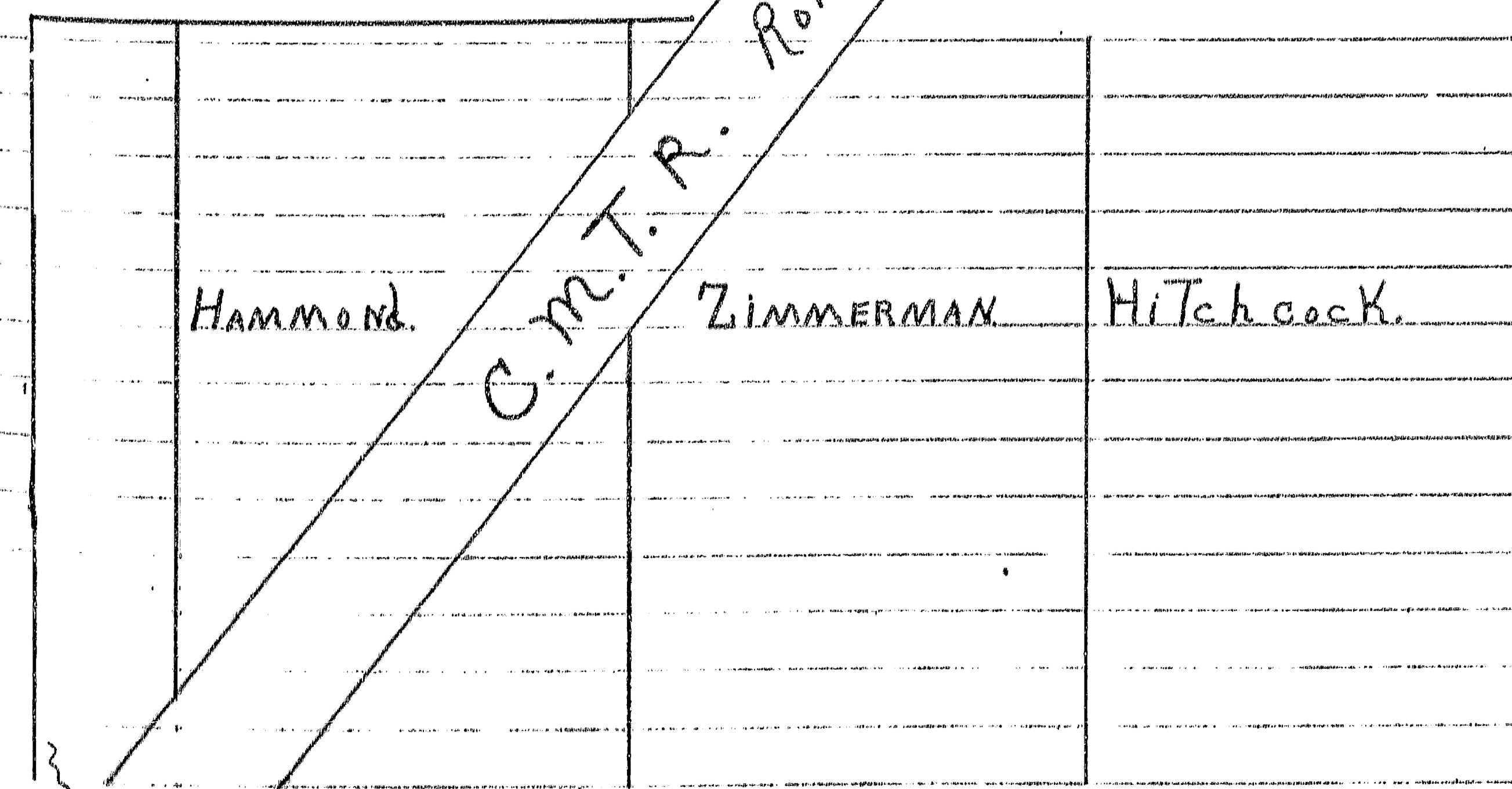
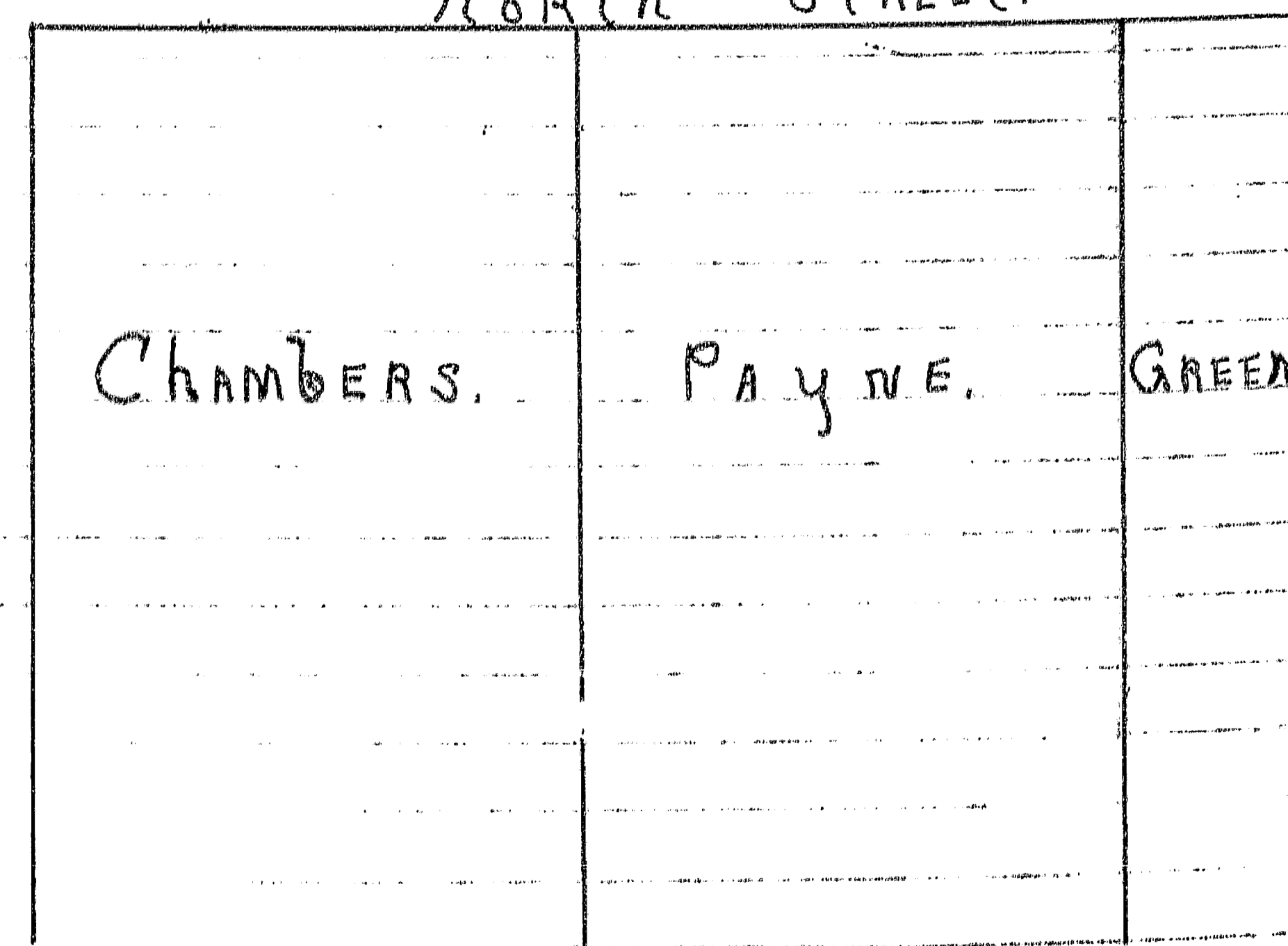
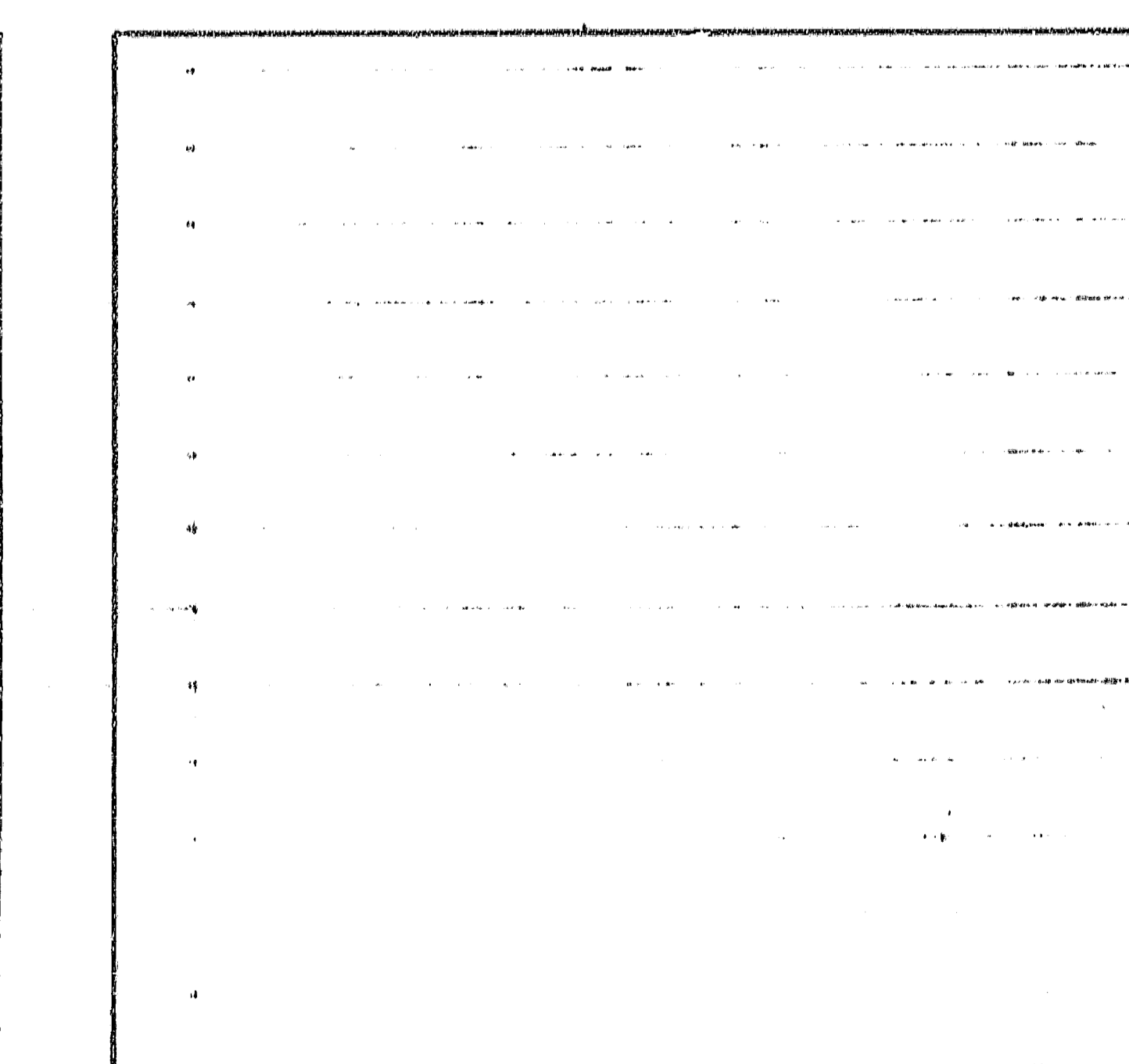
8	7	6	5	4	3	2	1
BLOCK 2.							
9	10	11	12	13	14	15	16

66 FT. 66 FT. 66 FT. 66 FT. 66 FT. 66 FT. 66 FT. 66 FT.

11	10	9	8	7	6	5	4	3	2	1
BLOCK 4.										
14	15	16	17	18	19	20	21	22	23	24

66 FT. 66 FT. 66 FT. 66 FT. 66 FT. 66 FT. 66 FT. 66 FT.

12	11	10	9	8	7	6	5	4	3	2	1
BLOCK 6.											
13	14	15	16	17	18	19	20	21	22	730 FT.	



CHAMBERS. PAYNE. GREEN.

HAMMOND. ZIMMERMAN. HITCHCOCK.

C.M.T.P. ROAD

Peck and Woods Addition to Salisbury, is bounded and described as follows, to wit
Commencing at a stone Monument which stands at the intersection of North and
Seminary streets, in the Original Plat of the Town of Salisbury, thence due
line which is at a perpendicular distance of two rods from the
turn out.

of the ten acre lots numbered one, two, three, four & five, one hundred and
four rods and seven tenths of a Rod, to the intersection of the west line of the
Military tract Railroad, thence North Easterly, along the west line of
turn out.